



LABORATÓRIO NACIONAL
DE ENGENHARIA CIVIL



12th International Workshop on Advanced Ground Penetrating Radar

Lisbon, 5th to 7th of July, 2023

**SPONSORSHIP
AND TECHNICAL EXHIBITION GUIDE**



<http://iwagpr2023.lnec.pt/>

GENERAL INFORMATION

We encourage all our industry and organisation participants to consider being sponsor. Sponsorship will provide your company with greater visibility to the conference delegates and highlight your standing in the GPR community.

We will provide an exhibition space where companies can showcase their latest products and innovations, and interact with engineers and scientists from industry and academia. The exhibition space will be in an area close to where the technical sessions and coffee breaks will take place to maximise footfall. Placement of the exhibition booths will be determined by the conference organisers.

Our primary sponsorship opportunities are offered as Gold, Silver and Bronze packages, and we also have standalone items that can be separately sponsored. We are always happy to discuss your sponsorship requirements and tailor packs to suit your own needs, email us at iwagpr2023@lnec.pt

You can select any of the sponsorship and exhibitor packages when you register for the conference through our registration system.

Our registration system is now open for sponsors/exhibitors until 31st of March 2023.

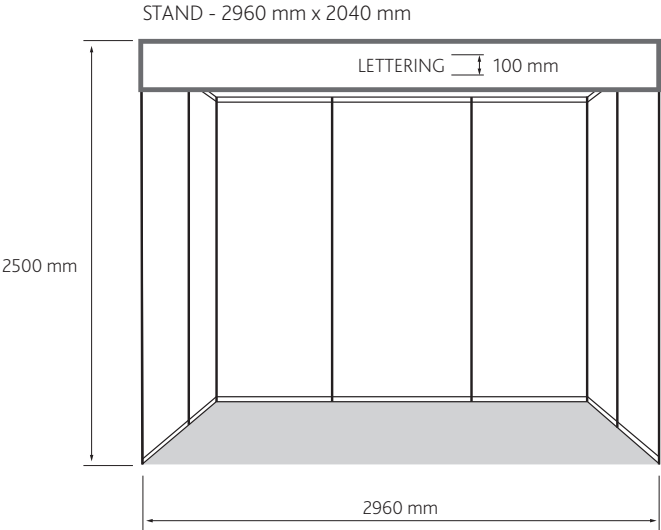
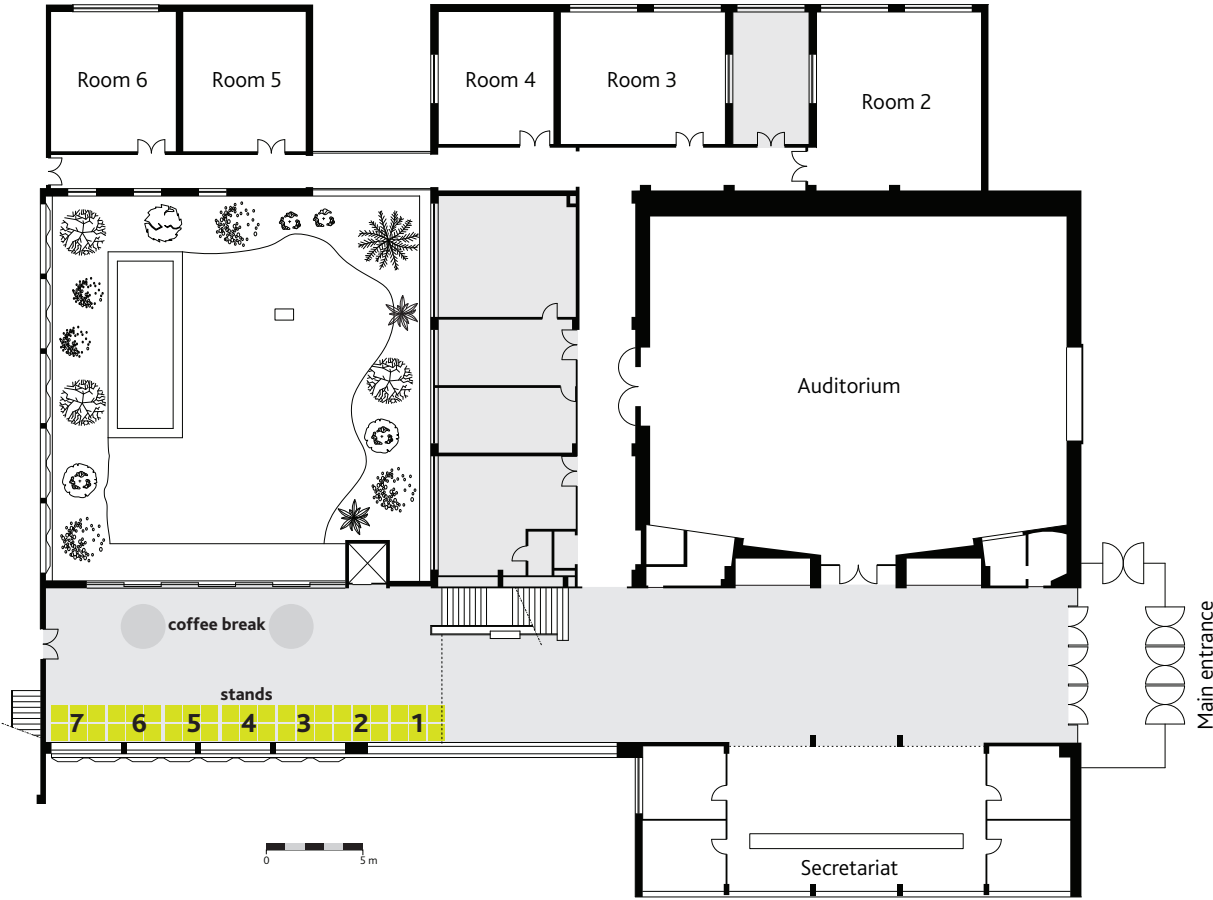
SPONSOR/EXHIBITOR PACKAGES

Principal Sponsorship	Gold Sponsor	Silver Sponsor	Bronze Sponsor
Included conference registrations	3	2	1
Participation on DEMOS' Session	Yes	Yes	–
Logo on Workshop Sessions Opening	Yes, Large	Yes, Small	Yes, Small
Stand / Exhibitor	Yes	Yes	Yes
Stand location preference	Yes	–	–
Logo on Flyer, Program and Website	Yes	Yes	Yes
Cost (EUR)	3000	2400	1700

OTHER SPONSORSHIP OPPORTUNITIES

Event/Item	Details	Cost (EUR)
Conference dinner	Publicised by conference organisers during opening address. Includes display of company banner / other material (company provided) during event. Publicised on the dinner menu/program.	1000
Ice-breaker event	Publicised by conference organisers during opening address. Includes display of company banner / other material (company provided) during event.	500
Coffee Break	Publicised by conference organisers during opening address. Includes display of company banner / other material (company provided) during event.	250
Lunch	Publicised by conference organisers during opening address. Includes display of company banner / other material (company provided) during event.	500
Music on Event	Publicised by conference organisers during opening address. Includes display of company banner / other material (company provided) during event. Publicised on the event program.	500

TECHNICAL EXHIBITION PLAN



TECHNICAL EXHIBITION PLAN

LNEC CAMPUS

LNEC's *campus* is located in central Lisbon, covering an area of about 22 hectares. Diamond sponsors may perform live demos of their equipment on the *campus* (near the buildings, in the gardens, inside pavilions).

